

2019 District VI Vocal Jazz Festival Schedule

Friday March 1, 2019

School	Director	Warm Up	Performance
Conners Emerson Middle School Show Choir	Rebecca Edmonson	12:30	1:00
Mountain View Middle School Show Choir	Lisa Blanchette	1:00	1:30
EEMS Middle School Show Choir	Tyler Costigan Malen Hsu	1:30	2:00
Pemetic Middle School Show Choir	Ed Michaud	2:00	2:30
Peninsula Middle School Show Choir	Emily Jordan Stephen Hodgdon	2:30	3:00
Trenton Middle School Show Choir	Mary de Koning	3:00	3:30
Ellsworth High School Jazz Choir	Jamie Calandro	3:30	4:00
Dinner Break 4:30- 5:30	Crock Pot Meals Pizza & Hot Dogs	Nachos, Baked Goods Drinks	EHS Cafeteria
MDI Trojan Trebs High School Show Choir	Frank Bachman Catherine Forthofer	5:00	5:30
Sumner High School Show Choir	Lisa Blanchette	5:30	6:00
Mount Desert Island High School Show Choir	Bronwyn Kortge	6:00	6:30
Ellsworth High School Show Choir	Rebecca Wright	6:30	7:00

All performances are held in the Ellsworth High School Auditorium

Admission

\$5.00 Adults

\$3.00 Student/Seniors

\$15.00 Family

Music & Arts T-Shirts for sale \$5.00

Crock Pot Meals, Pizza, Hot Dogs, Baked Goods, & Drinks available for purchase
in the cafeteria.

ONLY WATER ALLOWED IN THE AUDITORIUM

DISTRICT VI VOCAL JAZZ FESTIVAL **EXPECTATIONS FOR USE OF ELLSWORTH HIGH SCHOOL**

Welcome to Ellsworth High School. We are excited to serve as your host for the District VI Vocal Jazz Festival and are happy to have you join us this year. For your safety and the safety of others, please observe the following rules and share them with your students.

- Refreshments are allowed in the cafeteria and the common areas adjacent to the cafeteria ONLY.
- Only water is allowed in the auditorium and gymnasium. No FOOD, DRINK, OR GUM.
- Shoes must be worn in the building at all times.
- Please leave your designated homeroom the way you found it.
- Do not enter another school's designated homeroom.
- Do not touch any computers or equipment that does not belong to your group.
- Keep noise to a minimum as classes and performances are in progress throughout the day.
- All schools are responsible for monitoring their own students.
- An Ellsworth High School student will be assigned to you and will serve as your host. They are available to help answer questions and offer directions to your group.

Ellsworth High School officials reserve the right to remove from the building any student or individual who is not cooperative, or who exhibits inappropriate behavior. Any incidents of inappropriate behavior on the part of visiting schools will be reported to the principal and superintendent of those schools.

PLEASE MAKE NOTE OF THESE DIRECTIONS FOR THE FLOW OF THE DAY!



SET DROP OFF HERE

ENTER FOR REGISTRATION HERE

- Buses should drive up to the front of the high school to the entrance marked **REGISTRATION**.
- Group director will enter the school through the front entrance of the school to register at the registration desk, which will be located just inside the double doors. (During registration, students and bus driver will remain on the bus until registration is complete). During the registration process we will send a volunteer/student host out to your bus to stamp the hands of the students, bus driver, and chaperones. **Please be sure that EVERYONE gets a hand stamp. No stamp- No entrance. This is a safety issue and we appreciate your cooperation.**
- Director will register the group and provide the registration desk with any and all **FINAL** changes in the soloists, songs, etc. Please be ready to make necessary corrections on your forms.
- Director will be introduced to your student host who will escort your group to your homeroom area.
- Show choir sets are to be unloaded and brought in the designated door to be stored in the gym. Instruments are to be taken with you to your group's homeroom space. A school map was provided in your director's packet.
- Parking for the bus/truck is available in the far parking out of the school or in the lower lot accessible via the old school entrance.
- Student hosts will escort the director and their group to the warm-up room, and then to the ready area at your assigned time, where you will be introduced to the stage manager. A schedule of times was provided via email and in your director's packet.

- The stage manager will direct you onto the stage. **IMPORTANT:** Timing starts when your first person crosses the designated line onto the stage. As soon as the group is set up, the director will give a signal to the stage manager. Timing will then be suspended as the emcee announces your group. Timing ends when your last person crosses the designated line going off stage.
- Show choir sets should be immediately removed from the performance area and stored in a location designated by the stage manager. Instruments go with your group back to your group's homeroom space.
- We encourage the students to watch other performances, however, please be sure props, accessories, sets, etc. are properly stored prior to coming into the performance area.

Ellsworth High School and our visual and performing arts boosters wish all the performers the best during the competition. Please be reminded that everyone deserves respect no matter the outcome. Please be kind with your words and feedback. If you need assistance throughout the day, please come to the registration desk and a booster member will assist you.

**ELLSWORTH VISUAL & PERFORMING
ARTS BOOSTERS**

**2019 DISTRICT IV - VOCAL JAZZ FESTIVAL
MARCH 1, 2019 AT ELLSWORTH HIGH SCHOOL**

CAFÉ MENU

(available after noon)

CROCKPOT FOOD - \$3.00

Chili, Mac & Cheese, Meatballs, Chop Suey, Fried Rice
Pulled Pork Sliders, Hotdogs & Beans, Chicken/Pasta Alfredo, Pasta Salad...

HOT DOGS - \$2.00

PIZZA - \$2.00

SOFT PRETZELS - \$2.00

NACHOS - \$2.00

CHIPS- \$1.00

BAKED GOODS - \$1.00

DRINKS - \$1.00

**WATER, SODA, GATORADE
COFFEE, TEA, HOT CHOCOLATE**

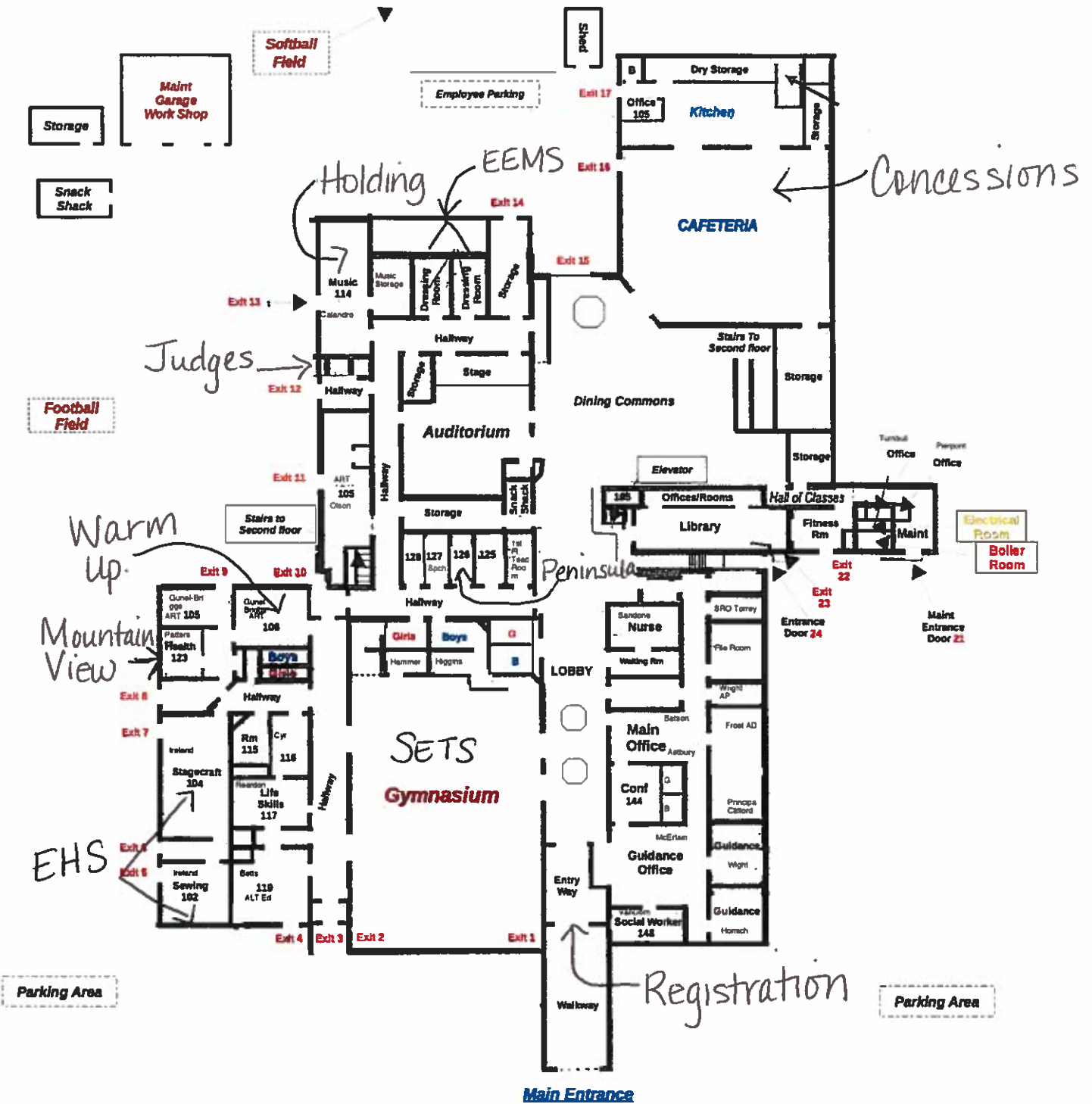
PLEASE NOTE:

ONLY WATER IS ALLOWED IN THE AUDITORIUM

MUSIC & ARTS T-SHIRTS

ON SALE

\$5.00



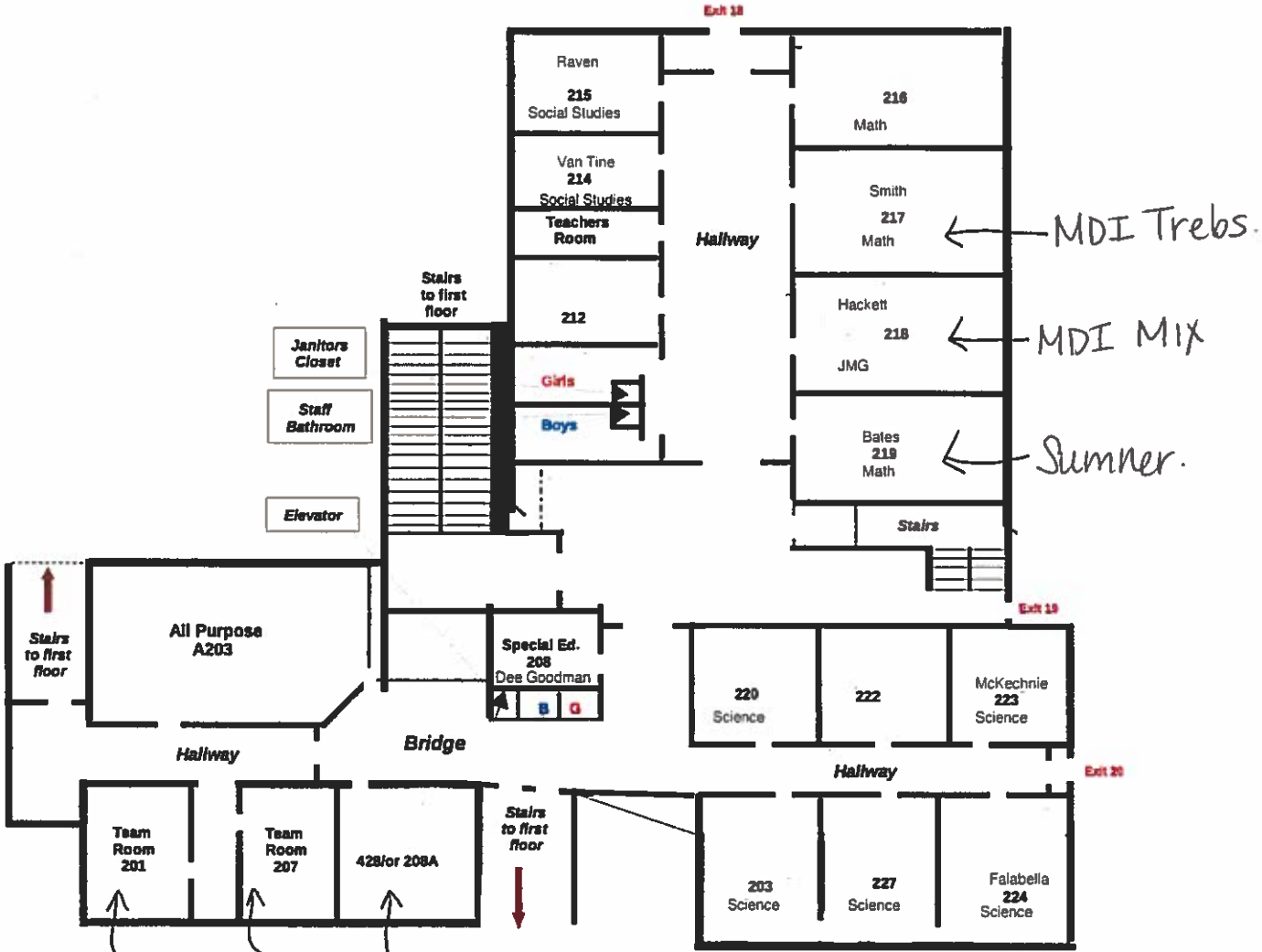
Ellsworth High School



First Floor

Baseball Field

Green House



← MDI Trebs.
← MDI MIX
← Sumner.

↑
Conners
Emerson

↑
Pematic

↑
Trenton

Ellsworth High School
Second Floor

MMEA Jazz Festival Performance Criteria Show Choirs

Musical Performance Criteria (50 Points)

Skill	Superior Level	Excellent Level	Good Level	Fair Level	Needs Improvement
Rhythm Accuracy	Superb control of pulse, tempo, and rhythmic patterns. Ensemble cohesiveness is outstanding at all times. Precision and clarity are exemplary. Flaws, if any, are very minor and quickly corrected.	Excellent control of pulse, tempo and rhythmic patterns with a few minor flaws. Ensembles cohesiveness is excellent with a few minor flaws. Precision and clarity are excellent with a few minor flaws.	Good control of pulse, tempo, and rhythmic patterns most of the time. Ensemble is cohesive a good amount of the time with problems occurring. Precision and clarity occurs but is not consistent	Some control of pulse, tempo, and rhythmic patterns during performance. Ensemble cohesiveness is flawed a majority of the time. Some precision and clarity.	Very little to no control of pulse, tempo, and rhythmic patterns during performance. Ensemble has very little cohesiveness. Precision and clarity is poor throughout the performance.
Tone Quality	Achieves superlative tone quality. Tone is well focused, full, open, resonant, consistent and uniform. Utmost clarity is achieved.	Achieves excellent tone quality. Tone is well focused, full, open, and resonant a majority of the time. Utmost clarity is achieved with a few exceptions.	Achieves good tone quality with some minor flaws. Tone is well focused, open, and resonant some of the time. Clarity can be lost during performance.	Achieves fair tone quality with flaws. Tone focus and resonants is lacking most of the time. Clarity is lacking throughout the performance.	Does not achieve tone quality with many flaws. Tone is not focused or resonant. Very little to no clarity is achieved during the performance.
Intonation	Melodic and Harmonic intonation is superior. Students perform superior control of pitch in all registers. Superior listening and adjusting skills are demonstrated.	Melodic and Harmonic intonation is excellent and with very little flaws. Students perform excellent control of pitch in all registers a majority of the time. Excellent listening and adjusting skills are demonstrated with very little errors	Melodic and Harmonic intonation is good with some flaws. Students have good control of pitch in all registers most of the time. Good listening and adjusting skills are demonstrated most of the time.	Melodic and Harmonic intonation is fair with flaws throughout the performance. Students perform fair control of pitch, but have problems in certain ranges. Students listen and adjust their intonation some of the time.	Melodic and Harmonic intonation is poor. Students perform with very little control of pitch. Listening and adjusting skills are demonstrated very little to not at all.

Skill	Superior Level	Excellent Level	Good Level	Fair Level	Needs Improvement
Balance and Blend	Superior blend and balance maintained at all times. Tonal blend is uniform and consistent through all registers and dynamic levels. Superior listening is demonstrated at all times.	Excellent blend and balance maintained a majority of the time. Tonal blend is uniform and consistent through all registers and dynamic levels with a few flaws. Excellent listening is demonstrated at all times.	Good blend and balance maintained with some flaws throughout the performance. Tonal blend is uniform and consistent through all registers and dynamic levels some of the time. Good listening is demonstrated some of the time.	Fair blend and balance maintained with flaws occurring throughout the performance. Tonal blend is not always uniform and consistent through all registers and dynamic levels.	Very little to no blend and balance maintained during the performance. Very little to no uniformity or consistency in Tonal Blend through all registers and dynamic levels.
Dynamics	Superior dynamic range and control at all levels. The performance exhibits thorough use of appropriate dynamic levels based on genre and style and exhibits superior dynamic density.	Excellent dynamic range and control at all levels, with a few minor flaws. The performance exhibits use of appropriate dynamic levels based on genre and style and exhibits excellent dynamic density with a few exceptions.	Good dynamic range and control at all levels most of the time. The performance exhibits good use of appropriate dynamic levels based on genre and style.	Fair dynamic range and control at all levels some of the time. The performance exhibits some use of appropriate dynamic levels based on genre and style.	Very little to no dynamic range and control at all levels. The performance exhibits very little to no use of appropriate dynamic levels based on genre and style.
Articulation	Outstanding and comprehensive use of proper articulations for genre is demonstrated at all times. Articulation is executed with superior consistency and uniformity.	Excellent use of proper articulations for genre is demonstrated. Articulation is executed with consistency and uniformity with very little flaws.	Good use of proper articulations for genre is demonstrated. Articulation is executed with good consistency and uniformity with some flaws.	Fair use of proper articulations for genre is demonstrated. Articulation is executed with flaws in consistency and uniformity.	Very little to no use of proper articulations for genre is demonstrated. Articulation is not executed with consistency and uniformity.
Texture and Harmony	Vocal Texture and Harmony is executed with superior precision. Harmonic structure is blended and balanced at all times.	Vocal Texture and Harmony is executed with excellent precision. Harmonic structure is blended and balanced with a few minor flaws	Vocal Texture and Harmony is executed with good precision. Harmonic structure is blended and balanced with flaws.	Vocal Texture and Harmony is executed with fair precision. Harmonic structure has some blend and balance but is not consistent.	Vocal Texture and Harmony is not executed. Harmonic structure has very little to no blend and balance.

Skill	Superior Level	Excellent Level	Good Level	Fair Level	Needs Improvement
Musical Expression	Expression is natural and is executed with superior precision based on content and genre. The performance translates the musical expression to the audience with superior effectiveness.	Expression is executed with excellent precision based on content and genre. The performance translates the musical expression to the audience with excellent effectiveness, and very little flaws.	Expression is executed with good precision based on content and genre. The performance translates the musical expression to the audience with good effectiveness, but is not always consistent.	Expression is executed with fair precision based on content and genre. The performance has problems translating the musical expression to the audience.	Expression is not executed with precision based on content and genre. The performance does not translate the musical expression to the audience.
Musical Interpretation	Musical style is thoroughly executed all times based on genre. Uniformity of style is consistent during performance. Performers exhibit a superior understanding of style and interpretation of the composition(s).	Musical is executed during the performance with only a few flaws, based on genre. Uniformity of style is consistent during performance with a very little error. Performers exhibit an excellent understanding of style and interpretation of the composition(s).	Musical style is executed with a fair level with some flaws. Uniformity of style is somewhat consistent during performance. Performers exhibit a good understanding of style and interpretation of the composition(s).	Musical style sometimes executed based on genre with flaws. Uniformity of style is not very consistent during performance. Performers exhibit a fair understanding of style and interpretation of the composition(s).	Musical style is not executed. Uniformity of style is not consistent during performance. Performers exhibit a very little to no understanding of the style and interpretation of the composition(s).
Tempo	Superior control of tempo and tempo changes at all times. Tempo is appropriate for the genre.	Excellent control of tempo and tempo changes, with very little errors. Tempo is appropriate for the genre.	Good control tempo and tempo changes, with some flaws. Tempo varies in appropriateness of the genre.	Fair control of tempo and tempo changes with many flaws.	Very little to no control of tempo and tempo changes.
Phrasing	Phrasing is always natural and uniformly executed by the ensemble. Performers exhibit clear, meaningful, and expressive shaping of musical phrases at all times.	Phrasing is excellently executed by the ensemble. Performers exhibit clear, meaningful, and expressive shaping of musical phrases, with some minor flaws.	Phrasing executed by the ensemble with some flaws. Performers exhibit clear, meaningful, and expressive shaping of musical phrases but are inconsistent.	Phrasing is fairly executed by the ensemble with flaws. Performers do not always exhibit clear, meaningful, and expressive shaping of musical phrases.	Phrasing is not executed by the ensemble.

Visual Performance Criteria (35 Points)

Skill	Superior	Excellent	Good	Fair	Needs Improvement
Choreography and Staging	Choreography and Staging is executed consistently and effectively at all times. Choreography and Staging exemplifies and enhances the genre and style of the musical performance.	Choreography and Staging is executed effectively with very little flaws. Choreography and Staging enhances the genre and style of the musical performance most of the time.	Choreography and Staging is executed with some flaws and errors. Choreography and Staging enhances the genre and style of the musical performance some of the time.	Choreography and Staging is executed with many flaws and errors. Choreography and Staging enhances the genre and style of the musical performance very little of the time.	Choreography and Staging is not executed. Choreography and Staging does not enhance the genre and style of the musical performance.
Difficulty of Movement	Choreography and Staging has great difficulty in movement and genre allowing the performer to take risks which they successfully complete.	Choreography and Staging has strong difficulty in movement and genre allowing the performer to take risks which they successfully complete a majority of the time.	Choreography and Staging has difficulty in movement and genre allowing the performer to take risks which they successfully complete some of the time.	Choreography and Staging has some difficulty in movement allowing the performer to take very little risk.	Choreography and Staging very little to no difficulty in movement and genre allowing the performer to take little to no risks.
Variety of Style	Choreography demonstrates a superior variety of style that enhances the musical compositions of the performance	Choreography demonstrates an excellent variety of style that enhances the musical compositions most of the time.	Choreography demonstrates some variety of style. Choreography sometimes enhances the musical compositions.	Choreography demonstrates very little variety of style.	Choreography demonstrates no variety of style.
Strength and Vitality	Ensemble demonstrates superior strength and vitality of movement. Choreography is strong and articulate at all times.	Ensemble demonstrates excellent strength and vitality of movement. Choreography is strong and articulate with a few flaws.	Ensemble demonstrates good strength and vitality of movement. Choreography is strong and articulate, but not consistently.	Ensemble demonstrates fair strength and vitality of movement. Choreography is not always strong and articulate.	Ensemble demonstrates very little to no strength and vitality of movement. Choreography is not strong or articulate.

Skill	Superior	Excellent	Good	Fair	Needs Improvement
Showmanship and Presentation	Ensemble demonstrates a superior level of showmanship at all times. Ensemble facial and body expression enhances the musical compositions and effectively expresses the performance to the audience.	Ensemble demonstrates an excellent level of showmanship with very few flaws. Ensemble facial and body expression enhances the musical compositions.	Ensemble demonstrates a good level of showmanship with some flaws. Ensemble facial and body expression enhances the musical compositions most of the time.	Ensemble demonstrates a fair level of showmanship with many flaws. Ensemble facial and body expression enhances the musical compositions inconsistently.	Ensemble demonstrates very little to no level of showmanship. Ensemble facial and body expression does not enhance the musical compositions.
Spacing	Ensemble demonstrates a superior level of spatial awareness while they move. Compositional intent is always present and effective.	Ensemble demonstrates an excellent level of spatial awareness while they move with a few flaws. Compositional intent is present and mostly effective.	Ensemble demonstrates a good level of spatial awareness with some flaws. Compositional intent is somewhat present and effective.	Ensemble demonstrates a fair level of spatial awareness while they move with a large amount of flaws. Compositional intent is barely present and ineffective.	Ensemble demonstrates very little to no level of spatial awareness while they move. Compositional intent is not present and ineffective.
Intensity	Ensemble executes choreography with superior intensity consistently.	Ensemble executes choreography with a high level of intensity with a few flaws	Ensemble executes choreography with good intensity but is not always consistent.	Ensemble executes choreography with a fair level of intensity, but has many flaws and is not consistent.	Ensemble does not execute choreography with intensity.
Precision	Ensemble executes choreography with superior precision by whole ensemble. Choreography is so precise that it makes the presentation "pop".	Ensemble executes choreography with excellent precision by whole ensemble with only a few flaws.	Ensemble executes choreography with good precision by whole ensemble with some flaws.	Ensemble executes choreography with fair precision by whole ensemble, but is not consistent and has many flaws.	Ensemble executes choreography with very little to no precision.
Body Carriage and Posture	Ensemble has a superior sense of body posture and stage presence. This is seen by the entire ensemble with very few exceptions.	Ensemble has an excellent sense of body posture and stage presence with a few flaws..	Ensemble has a good sense of body posture and stage presence, but is inconsistent.	Ensemble has a fair sense of body posture and stage presence, but is very inconsistent.	Ensemble has a very little to no sense of body posture and stage presence, but is very inconsistent.

Skill	Superior	Excellent	Good	Fair	Needs Improvement
Visual Expression	<p>Ensemble demonstrates superior skill and execution the overall choreography. The Choreography supports, highlights, and enhances the visual aspect of the performance.</p>	<p>Ensemble demonstrates excellent skill and execution the overall choreography, with very few flaws. The Choreography supports, highlights, and enhances the visual aspect of the performance most of the time.</p>	<p>Ensemble demonstrates good skill and execution the overall choreography, with some flaws. The Choreography supports, highlights, and enhances the visual aspect of the performance some of the time.</p>	<p>Ensemble demonstrates fair skill and execution the overall choreography, with more significant flaws. The Choreography supports, highlights, and enhances the visual aspect of the performance.</p>	<p>Ensemble demonstrates very little to no skill and execution the overall choreography. The Choreography does not supports highlights or enhances the visual aspect of the performance.</p>
Emotional Expression	<p>The execution of the emotional aspect of the musical compositions is greatly enhanced, and expressed by the choreography and staging of the performance. The performers connect emotionally with the musical compositions and are able to communicate that with the audience throughout the performance.</p>	<p>The execution of the emotional aspect of the musical compositions is enhanced, and expressed by the choreography and staging of the performance. The performers connect emotionally with the musical compositions and are able to communicate that with the audience throughout the performance, with some exceptions.</p>	<p>The execution of the emotional aspect of the musical compositions is somewhat enhanced, and expressed by the choreography and staging of the performance. The performers connect emotionally with the musical compositions and are able to communicate that with the audience throughout the performance some of the time.</p>	<p>The execution of the emotional aspect of the musical compositions is barely enhanced, and expressed by the choreography and staging of the performance. The performers inconsistently connect emotionally with the musical compositions and are somewhat able to communicate that with the audience.</p>	<p>The execution of the emotional aspect of the musical compositions is not enhanced or expressed by the choreography and staging of the performance. The performers do not connect emotionally with the musical compositions and are not able to communicate that with the audience throughout the performance.</p>

Overall Presentation and Other Factors (15 Points)

Skill	Superior	Excellent	Good	Fair	Needs Improvement
Programming	The programming creates a superior entertainment value, and demonstrates age appropriate arrangements but are challenging to the ensemble.	The programming creates an excellent entertainment value, with a few minor flaws and demonstrates age appropriate arrangements but are challenging to the ensemble.	The programming creates a good entertainment value for the most part, and demonstrates age appropriate arrangements but are challenging to the ensemble with some errors in judgement.	The programming creates a fair entertainment value with many flaws in choice, and demonstrates some age appropriateness, and some problems with challenging the performers.	The programming creates very little to no entertainment value, and does not demonstrate age appropriate arrangements or that are challenging to the ensemble.
Combination of Music and Visual	The overall performance of both music and choreography is visually superior and clearly demonstrates the performers strong ability to sing while dancing and meets the high musical and performance demands of the show.	The overall performance of both music and choreography is visually excellent and demonstrates the performers ability to sing while dancing.	The overall performance of both music and choreography is visually good and demonstrates the ability to sing while dancing, with a few flaws.	The overall performance of both music and choreography is visually fair and demonstrates some of the performers ability to sing while dancing, with some flaws.	The overall performance of both music and choreography is not visually strong and does not demonstrate the performers strong ability to sing while dancing.
Transitions	The transitions between musical compositions are seem-less and provide superior continuity as well as enhancing the visual and emotional aspect of the performance.	The transitions between musical compositions provide excellent continuity and enhance the visual and emotional aspect of the performance, with a few exceptions.	The transitions between musical compositions provide good continuity and most of the time enhance the visual and emotional aspect of the performance with some exceptions.	The transitions between musical compositions provide fair continuity and somewhat enhance the visual and emotional aspect of the performance with some large exceptions.	The transitions between musical compositions have very little to no continuity and do not enhance the visual and emotional aspect of the performance.
Pace of Show	The pace of the performance is extremely effective and sustains interest and attention throughout the performance.	The pace of the performance is effective and sustains interest and attention throughout the performance, with a few exceptions.	The pace of the performance is mostly effective and mostly sustains interest and attention throughout the performance.	The pace of the performance is somewhat effective and somewhat sustains interest and attention throughout the performance with some exceptions.	The pace of the performance is not effective and does not sustain interest and attention throughout the performance.

Skill	Superior	Excellent	Good	Fair	Needs Improvement
Pit Orchestra/Rhythm Section	The Pit Orchestra/Rhythm Section provides superior enhancement, and provides consistent drive and tempo control throughout the entire performance.	The Pit Orchestra/Rhythm Section provides excellent enhancement, and provides consistent drive and tempo control throughout the entire performance, with a few exceptions.	The Pit Orchestra/Rhythm Section provides good enhancement, with some flaws and provides drive and tempo control throughout the entire performance that is somewhat consistent.	The Pit Orchestra/Rhythm Section provides fair enhancement, with flaws, and drive and tempo control is lacking throughout the entire performance.	The Pit Orchestra/Rhythm Section does not provide enhancement, or consistent drive and tempo control throughout the entire performance.

MMEA Jazz Festival

Show Choir

Performance Adjudication Form

Name of Group: _____

Division: _____

Director: _____

Date: _____

Event: (Circle One) State Festival District Festival

Musical Performance (Total of 50 Pts.)

Consider:

Rhythm Accuracy

Tone Quality

Intonation

Balance/Blend

Dynamics

Texture/Harmony

Musical Expression

Musical Interpretation

Tempo

Phrasing

Gold (48-50)

Silver (46-47)

Bronze(44-45)

Honorable Mention (42-44)

Score:

Visual Performance (Total of 35 Pts.)

Consider:

Choreography and Staging

Difficulty of Movement

Variety of Style

Strength and Vitality

Showmanship and Presentation

Spacing

Intensity

Precision

Body Carriage and Posture

Visual Appearance

Emotional Expression

Gold (33-35)

Silver (32-33)

Bronze (31-32)

Honorable (29-30)

Score:

Overall Presentation and Other Factors (Total of 15 Pts.)

Consider:

Programming

Combination of Music and Visual

Transitions

Pace of Show

Pit Orchestra

Gold (14-15)

Silver (12-13)

Bronze (10-12)

Honorable Mention(9-10)

Score:

Total Score:

Adjudicator

Gold Award: 95-100

Silver Award: 90-94

Bronze Award: 85-89

Honorable Mention: 80-84

MMEA Jazz Festival

Jazz Ensemble/Jazz Choir

Performance Adjudication Form

SCHOOL _____

CLASS _____

DIRECTOR _____

EVENT _____

DATE _____

TECHNICAL MERIT [30]

Consider:

- Rhythm/Time
- Intonation/Tone
- Technique/Articulation/Diction
- Accuracy
- Attacks/Releases
- Control of Ranges

- Gold (29-30)
- Silver (27-28)
- Bronze (26)
- Honorable Mention (24-25)

ARTISTIC MERIT [30]

Consider:

- Tempo
- Phrasing
- Dynamics
- Balance/Blend
- Emotional Involvement
- Rhythm section interaction
- Interpretation

- Gold (29-30)
- Silver (27-28)
- Bronze (26)
- Honorable Mention (24-25)

SOLO/IMPROVISATION [20]

Consider:

- Style/Harmonic Content
- Ability to create personal musical statements
- Variety of soloists
- Opportunity for Improvisation

- Gold (19-20)
- Silver (18)
- Bronze (17)
- Honorable Mention (16)

PROGRAMMING/PRESENTATION [20]

Consider:

- Choice of Material
- Variety/Suitability/Difficulty
- Communication/Program Balance
- Appearance
- Preparation

- Gold (19-20)
- Silver (18)
- Bronze (17)
- Honorable Mention (16)

Adjudicator

TOTAL

Performance Criteria

- Gold – Outstanding performance in nearly every aspect and detail*
- Silver – Outstanding performance with a few minor errors or flaws*
- Bronze – Fine performance in many respects with minor errors or flaws*
- Honorable Mention - Performance achieves some aspects of technique and musicality*

Ratings

- Gold 95-100
- Silver 90-94
- Bronze 85-89
- Honorable Mention 80-84

PERFORMANCE CRITERIA
For Jazz Ensemble, Combos and Jazz Choirs

TECHNICAL MERIT

"GOLD" PERFORMANCE LEVEL

Rhythm/Precision: Superb control of pulse, tempo and rhythmic patterns. Ensemble cohesiveness is outstanding at all times. Precision and clarity are exemplary. Flaws, if any, are very minor and quickly corrected.

Articulation: Outstanding and comprehensive knowledge of articulation styles and techniques is demonstrated at all times. Wide variety of articulation played with excellent consistency and uniformity.

Facility: Technical facility is superb. Superior flexibility and dexterity exhibited by entire ensemble. Only minor flaws happen during the most demanding and complex passages. Concentration is superior, creating an extremely solid, polished performance.

Tone Quality: Achieves superlative tone quality. Tone is well focused, full, open, resonant, consistent and uniform in color. Utmost clarity is achieved.

Intonation: Instruments are tuned very well. Melodic and harmonic intonation is superior. Ability to control difficult tuning situations is well developed. Students perform with excellent control of pitch in all registers. Superior listening and adjusting skills are demonstrated.

"SILVER" PERFORMANCE LEVEL

Rhythm/Precision: Rhythmic accuracy and precision are excellent. Pulse and tempo are under control most of the time: lapses are infrequent and usually happen in more difficult situations. Clarity and ensemble cohesiveness is excellent most of the time.

Articulation: Articulation technique is well developed. Thorough knowledge of articulation styles is demonstrated. Uniformity is very good with weaknesses only shown by individual performers during complex passages.

Facility: Technical facility is well developed. Manual dexterity is excellent. Flexibility is quite good. Difficult passages are well played with only minor flaws. Excellent concentration. Performers respond to the director very well.

Tone Quality: Excellent tone achieved most of the time. Lapse and problems are infrequent, usually caused by the most demanding musical passages. Individual problems are minor and quickly corrected. Tonal color, focus and timbre are uniform, consistent and well controlled, though adversely affected in extremes of volume and range. Tonal clarity achieved most of the time.

Intonation: Instruments are tuned very well. Melodic and harmonic intonation is very good. Problems sometimes occur in range and volume extremes and difficult passages and situations, but are of short duration and/or quickly corrected. Listening is very good, with good ability to correct most problems.

"BRONZE" PERFORMANCE LEVEL

Rhythm/Precision: Rhythm accuracy, precision, note accuracy and understanding of subdivisions are good much of the time. Performers demonstrate good awareness of pulse and tempo although problems occur occasionally and may be difficult to overcome. Rhythmic patterns are interpreted correctly and uniformly much of the time. Problems occur with finer details of more complex rhythmic patterns and structures. Ensemble cohesiveness is good most of the time.

Articulation: Articulation technique and style are good most of the time. Styles performed uniformly much of the time, but lack complete consistency and accuracy. Complex articulations lack clarity and control.

Facility: Technical facility is good most of the time. Problems and breakdowns occur during difficult passages. Performers demonstrate a good degree of flexibility and dexterity. Correct technique usually demonstrated by many performers. Concentration is good but occasionally inconsistent. Performers pay attention to the director much of the time.

Tone Quality: Good basic approach demonstrated. Focus is good. Uniform texture and color is demonstrated in less demanding passages. Harshness and distortion are problems at upper volume levels and registers. Breath support is generally good but not always maintained.

Intonation: Instruments tuned relatively well. Intonation is often good, but with inconsistencies. Less demanding melodies, intervals and harmonic structures are performed successfully. Wide intervals, octaves, unisons are performed with partial success. Listening is good and attempts are made to correct obvious problems.

Technical Merit (cont.)

"HONORABLE MENTION" PERFORMANCE LEVEL

Rhythm/Precision: Basic rhythmic accuracy demonstrated in simple passages, although rapid or complex passages are weak. Rhythmic uniformity is inconsistent quite often. Precision achieved in simple passages. Pulse not always controlled; tempos not maintained at all times. Note accuracy is fair.

Articulation: Articulation technique is correct some of the time. Articulation styles are accurate and uniform some of the time.

Facility: Technical facility is fair. Flexibility and dexterity are persistent problems. Faster, more complex passages tax players beyond their ability. Good technique is demonstrated by some performers. Concentration seems to drift. Performers pay some attention to the director.

Tone Quality: Basic understanding of tone quality concepts not yet developed throughout the ensemble. Some individuals demonstrate good tone production. Volume and register extremes not controlled well, often harsh. Focus and resonance achieved occasionally. Uniformity of color and texture is weak. Breath support is often weak and inconsistent.

Intonation: Instruments are somewhat in tune. Melodic and harmonic intonation is inconsistent. Difficult intervals and harmonic structures are major intonation weaknesses. Individual and sectional intonation problems are seldom corrected..

ARTISTIC MERIT

"GOLD" PERFORMANCE LEVEL

Balance/Blend: Superior blend and balance maintained at all times, both within and between sections. Tonal blend is uniform and consistent. Extremes in register and volume do not detract from superior blend and balance. Quality is characteristic of the best ensemble sound. Superior listening is demonstrated at all times.

Interpretation/Style: Thorough and stylistically valid interpretation at all times. Uniformity of style is consistent at all times. Performers exhibit a thorough understanding of style, tempos and interpretation.

Phrasing/Expression: Phrasing is always natural and uniformly played by all sections and individuals. Performers exhibit clear, meaningful and expressive shaping of musical phrases at all times. Expression is natural. The performance is sensitive and highly effective.

Dynamics: Superior dynamic range with excellent control at all levels. The performance exhibits thorough use of all dynamic levels with excellent dynamic sensitivity.

"SILVER" PERFORMANCE LEVEL

Balance/Blend: Excellent blend and balance established and maintained most of the time. Tonal blend is almost always uniform and consistent. Balance between and within sections is very good most of the time. Problems occur only during the most difficult passages and are usually short in duration. Lapses are infrequent and generally minor. Characteristic ensemble sound fully achieved most of the time. Overall listening skills are well developed.

Interpretation/Style: Good uniform and meaningful interpretation most of the time. Some passages may be lacking in interpretation, but do not detract from the otherwise excellent performance. Stylistic accuracy is good most of the time. Tempos are accurate and consistent stylistically.

Phrasing/Expression: Phrasing is thorough and natural most of the time. Uniformity of phrasing is consistent throughout most of the performance. Expressive shaping of phrases and passages is very good with only occasional lapses. Expression is seldom mechanical or contrived.

Dynamics: Good use of dynamics throughout the performance with some lack of dynamic control. Good "ff's" and "pp's", but full dynamic range is not completely explored. Overall performance is expressive, sensitive and tasteful most of the time.

"BRONZE" PERFORMANCE LEVEL

Balance/Blend: Good balance and blend, though at times sections and/or individuals tend to dominate the sound. Less demanding passages have good blend, balance and voice relationships. Problems occur during extremes in volumes, and/or range, dynamic changes, dense harmonic structures, etc. Clarity is good but sometimes lacking. Good characteristic ensemble sound usually achieved. Good overall listening skills often demonstrated.

Interpretation/Style: Students exhibit meaningful and uniform interpretation some of the time. Style is good some of the time, but can often be rigid and mechanical. Stylistic accuracy is demonstrated at times. Tempos are consistent and accurate some of the time.

Artistic Merit (cont.)

Phrasing/Expression: Phrasing is basic, uniform and somewhat consistent some of the time although not always natural; often mechanical. Dynamic shaping of phrases is sometimes apparent.

Dynamics: Some successful attempts at basic dynamic variation though limited in scope and range. Lower dynamic levels not well used. Upper dynamic levels not always performed tastefully.

"HONORABLE MENTION" PERFORMANCE LEVEL

Balance Blend: Blend and balance is sometimes achieved during less demanding passages. Faster, louder and higher passages are not well balanced. Individual performers and/or sections tend to dominate the ensemble's sound most of the time. Good characteristic ensemble sound seldom achieved. Listening and attentiveness are inconsistent; often neglected.

Interpretation/Style: Little meaningful interpretation of musical passages. Style is undeveloped and inconsistent. Tempos are inconsistent.

Phrasing/Expression: Mostly mechanical and non-musical. Performers exhibit very little uniformity. Some attempts at expressing melodic lines, but with rigid and mechanical results.

Dynamics: Some attempts at altering dynamics, but with limited range. Dynamic changes are not well controlled and lack uniformity.

SOLO/IMPROVISATION

"GOLD" PERFORMANCE LEVEL

Style/Harmonic Content: The soloists perform demonstrate at a high level their ability to comprehend the particular style of the selection they are performing as well as a strong knowledge of the harmonic progression of the selection.

Ability to create personal musical statements: The majority of soloists are capable of bringing their own personal interpretation of the music in a mature presentation.

Variety of soloists: The performance presents a significant number of soloists at varying levels of competency.

Opportunity for Improvisation: The program as presented allows substantial opportunity for improvisational solos and the ensemble take full advantage of the opportunity.

Technique/Interpretation: Soloists demonstrate complete command of the music fundamentals required to maturely improvise. Stylistic and historical knowledge of the music performed is highly evident.

Precision-Notes/Rhythm: Notes and rhythms are exactly correct for the selection performed.

Facility/Style: Soloists demonstrate complete command of their instrument and the style of the selection performed.

"SILVER" PERFORMANCE LEVEL

Style/Harmonic Content: Most of the soloists demonstrate the ability to comprehend the particular style and harmonic knowledge of the selection

Ability to create personal musical statements: Many of the soloists demonstrate the ability to bring a personal interpretation of the music to their solo(s).

Variety of soloists: The performance allows the opportunity for several performers in solo situations.

Opportunity for Improvisation: The program as presented allows ample opportunity for improvisation and the performers avail themselves of the opportunity.

Technique/Interpretation: An excellent awareness of music fundamentals required to improvise is evident. Stylistic and historic knowledge of the music performed is evident.

Precision-Notes/Rhythm: The majority of the notes and rhythms are correct for the musical selection performed

Facility/Style: Soloists demonstrate an impressive command of their instrument and of the style of the selection performed.

"BRONZE" PERFORMANCE LEVEL

Ability to create personal musical statements: Several of the soloists demonstrate some ability to comprehend the particular style and harmonic content of the selection.

Variety of soloists: A minimal number of performers are given the opportunity to solo.

Opportunity for Improvisation: The program as presented has some opportunity for improvised solos but the opportunity for solos could have been given stronger emphasis.

Technique/Interpretation: Considerable awareness of the music fundamentals required to improvise is evident, however, there is a lack of stylistic and historical knowledge of the music performed.

Solo/Improvisation (cont.)

Precision-Notes/Rhythm: There is noticeable incorrectness of notes and rhythms used for the selections performed.

Facility/Style: A lack of command of their instrument or style of the selection performed affected the solo.

"HONORABLE MENTION" PERFORMANCE LEVEL

Style/Harmonic Content: Soloists demonstrate little knowledge of the particular style and harmonic content of the selection.

Ability to create personal musical statements: Soloist(s) do not demonstrate the ability to take ownership of their solo(s) and tend to struggle with performing the solos with some accuracy.

Variety of soloists: The bare minimum of solos are presented with generally only one or two performers soloing.

Opportunity for Improvisation: The program as presented showed little or no opportunity for improvised solos.

Technique/Interpretation: Soloist(s) lacked the music fundamentals and/or stylistic and historic knowledge to correctly perform the selected music.

Precision-Notes/Rhythm: Incorrect notes and rhythm take away any effectiveness of the solo.

Facility/Style: A lack of command of their instrument or style of the selection(s) performed greatly affected the solos(s)

PROGRAMMING/PRESENTATION

"GOLD" PERFORMANCE LEVEL

Choice of Music: Literature performed is appropriate for the festival and aesthetically pleasing. Programming is both effective and of varied styles and periods. Music performed challenges the group musically and intellectually, yet is within their capabilities given musical skills demonstrated.

Appearance: Appearance is uniform and neat. Group approaches and exits the performance area in a prideful, poised and orderly manner. Individuals remain focused and confidently attentive throughout the performance.

Preparation: The ensemble presents a well-practiced and rehearsed performance. Attention to detail is obvious and demonstrates significant thought and coordination.

"SILVER" PERFORMANCE LEVEL

Choice of Music: Literature performed is appropriate for the festival and aesthetically pleasing. Programming is both effective and of varied styles and periods. Music performed challenges the group musically and intellectually, yet some of the performance issues fall short of achieving the polished technical and artistic goals.

Appearance: Appearance is generally uniform and neat. Group approaches and exits the performance area generally in a prideful, poised and orderly manner. Most individuals remain focused and confidently attentive throughout the performance.

Preparation: Many of the performers appear to be well prepared but the ensemble needs continued rehearsal time in order to complete a polished level of performance.

"BRONZE" PERFORMANCE LEVEL

Choice of Music: Literature performed is appropriate for the festival and aesthetically pleasing but programming lacks variety because of stylistic issues, such as variety in time period or form. Most of the music performed is within the capabilities of the group given musical skills demonstrated.

Appearance: Appearance is generally uniform and neat. Group approaches and exits the performance area in an organized manner. Most individuals remain focused and confidently attentive throughout the performance.

Preparation: Many of the performers appear to be well prepared but the ensemble needs continued rehearsal time in order to complete a polished level of performance.

"HONORABLE MENTION" PERFORMANCE LEVEL

Choice of Music: Most of the literature performed is appropriate for the festival but because of difficulty level for the group and/or style of music

Appearance: : Appearance of some individuals distracted from the group. Some individuals lost focus and attentiveness to the event at hand.

Preparation: The performance lacks the individual attention to detail and performance polish that more time and effort would allow.